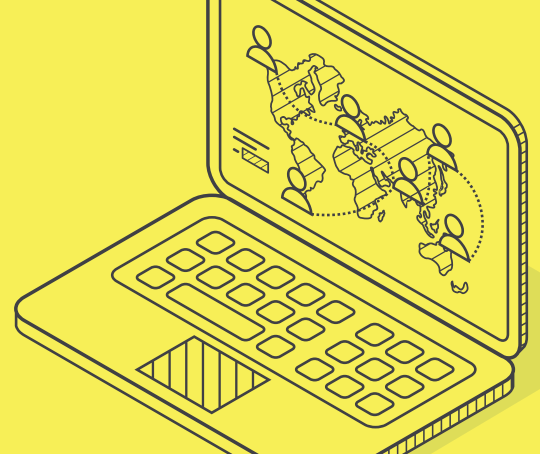


# HANDSET TRACKING



Manage workflow and ETA's with live handset tracking. With instant updates and configurable options for frequency of tracking and which devices are enabled for tracking.

Search historic data to cross reference delivery details, locations and routes.

Easy to use interface will show live locations of all employees.

A screenshot of the TrackTrans web application interface. On the left, there is a sidebar with the TrackTrans logo and the tagline "Keeping you on track". Below the logo, there are controls for a user ID "2407", "Show", "Logout", and a "Daylight Savings" toggle. A "Refresh" button is also present. A section titled "Request all current positions" lists 20 tracked handsets with their IDs and addresses. On the right, a map of the United Kingdom shows the live locations of these handsets as yellow and black icons. The map includes a search bar, navigation controls, and a small inset map of Europe in the bottom right corner.